



GMT MONTHLY MEMBERSHIP PROGRESS REPORT

Results as of: 6/30/2018

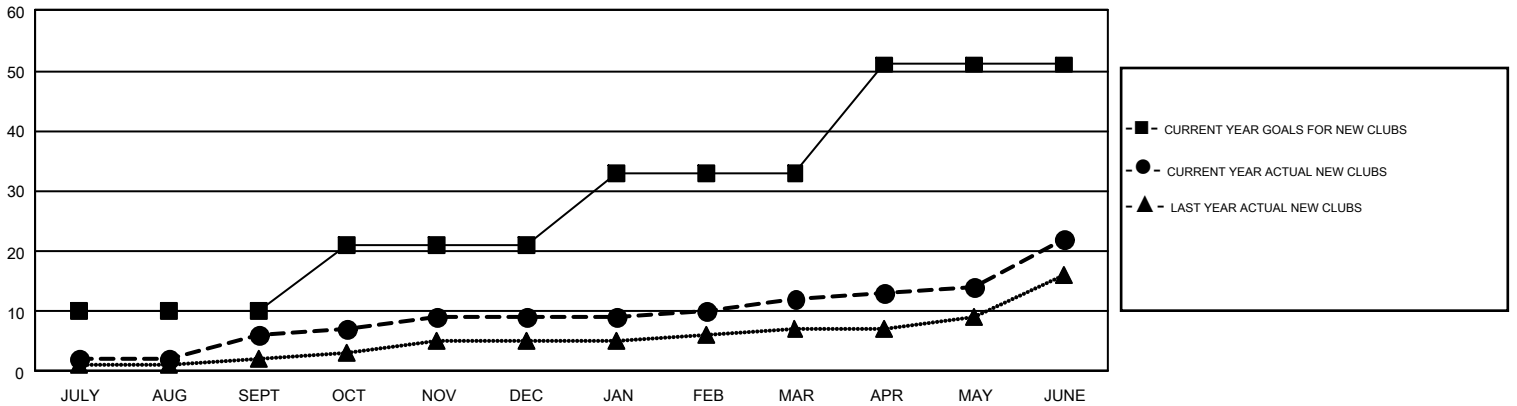
GMT Constitutional Area 1, Group B

GMT: CINDY GREGG

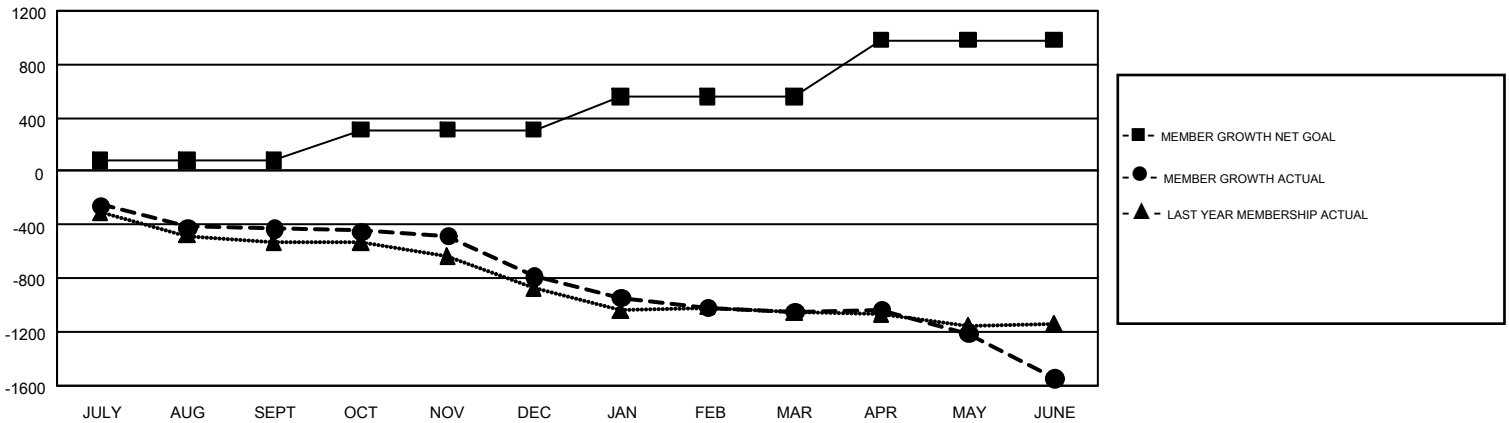
REPORT DOES NOT INCLUDE CLUBS IN UNDISTRICTED AREAS.

Clubs				Members			
RESULTS FOR 2017-2018				RESULTS FOR 2017-2018			
QUARTER	NEW CLUB GOAL	NEW CLUBS	DROPPED CLUBS	QUARTER	MEMBER GROWTH NET GOAL	MEMBER GROWTH ACTUAL	DROPPED MEMBERS ACTUAL (including transfers)
JULY/AUG/SEPT	10	6	5	JULY/AUG/SEPT	81	993	1,289
OCT/NOV/DEC	11	3	11	OCT/NOV/DEC	228	928	1,216
JAN/FEB/MAR	12	3	7	JAN/FEB/MAR	249	859	1,055
APR/MAY/JUNE	18	10	13	APR/MAY/JUNE	423	1,586	1,931

GOALS AND ACTUAL NEW CLUBS CUMULATIVE



GOALS AND ACTUAL MEMBERS CUMULATIVE



DROPPED CLUBS: 36	958 CLUBS OF 1,563 ADDED 1 OR MORE NEW MEMBERS	<u>GENDER DISTRIBUTION</u>
<u>DROPPED MEMBERS</u>	CLICK HERE FOR CUMULATIVE MEMBERSHIP DATA	MALE 29,340 (71.54%)
DECEASED 819		FEMALE 11,670 (28.46%)
CLUB CANCELLED 224		TOTAL FAMILY UNIT MEMBERS 0
OTHER 4,447		FAMILY MEMBERS PAYING HALF DUES 0
TOTAL 5,490		